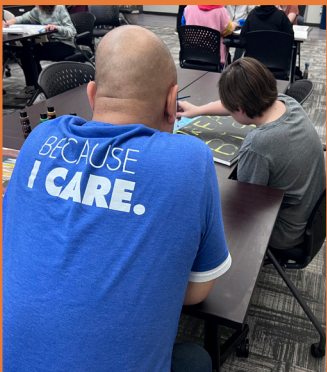


CONNECTIONS

ORCHARD PLACE • SPRING/SUMMER 2023 ISSUE





A Call to Action

Iowa youth are in dire need of mental health prevention and intervention services. There are not enough providers and where there are services, there is not a systematic way for youth or their families who love them to find these supports. The creation of a statewide youth mental health system is still being talked about, yet still woefully lacking.

The most recent Iowa Youth Survey, published in late 2022, showed an astonishing increase in the percentages of youth from 6th grade through high school reporting they experienced depression in the past 12 months to the severity that it interfered with their daily life. These increases in youth depression rates were creeping upward before the COVID pandemic began and now a staggering 36% of 11th graders in Iowa reported they felt sad or hopeless almost every day for two weeks or more in a row. Almost one in four 11th graders indicated they had thought about taking their own life.

These increases in depressed and suicidal youth are alarming. The data and the struggles of each youth represented in this report should give every one of us pause and serve as a call to action.

The encouraging news is that mental health prevention and intervention works for our youth and helps them get back to a full life in their community.

You have lifted up these youth through your volunteering, donations, and advocacy efforts. Thank you for being part of the solution. The need is greater than ever; we need you to continue to be champions for this mission.

Together, We're Developing Strong Futures,

Anne Starr, M.S.W.
Orchard Place CEO



2021 Iowa Youth Survey State Report



\$30,000 Match for Maddie GIVE NOW TO DOUBLE YOUR IMPACT

Funny, loving and sensitive. That's how her parents remember Madeline Claire Shodeen Parmeter. Maddie would do anything for anyone and brought joy to many. She found peace in working with animals and loved photography, music and her family.

Maddie battled borderline personality disorder, depression and social anxiety for many years before ending her life at the tender age of 21. The heartbreak of losing Maddie turned her parents, John Parmeter and Anita Shodeen, into even stronger advocates for mental health with a focus on removing barriers and improving access to care for youth and families.

Orchard Place - Child Guidance Center is Iowa's largest safety net provider for outpatient children's mental health services. No child is turned away due to lack of ability to pay. There is a projected \$135,000 need to cover the gap that results when families are unable to afford co-pays or are under or uninsured.

Maddie's parents will match the first \$30,000 in contributions made to the *Access for All* campaign.

"We give our time and money to Orchard Place because we want better results for those who come after us. We want to improve the mental health system, increase access to services and reduce stigma."

Give now online at www.orchardplace.org/donate or through the enclosed envelope. Be sure to note **Match for Maddie** in the designation field to help provide *Access for All*.



A contribution of **\$1,000** or more could support treatment for several children at our Child Guidance Center. A gift of **\$100** could fund one therapy session for an uninsured youth. **\$500** would cover five therapy sessions.



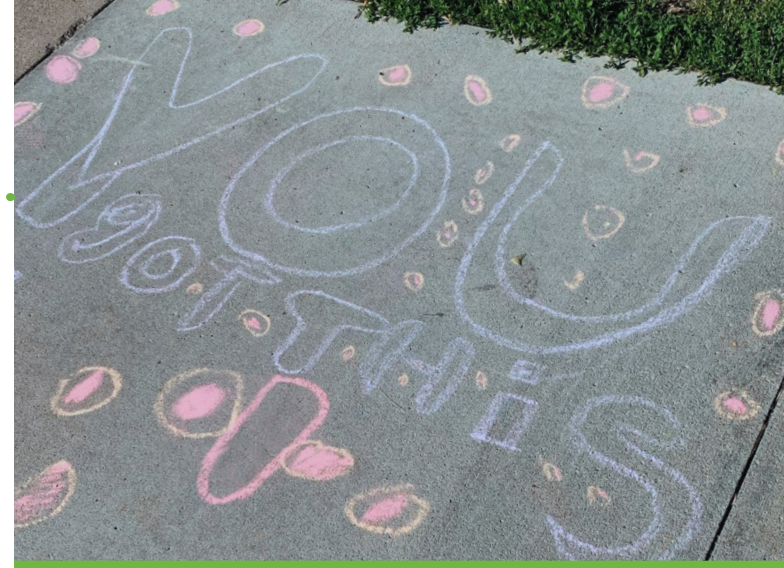
Why I Serve...

A middle school guidance counselor recognized the challenges my daughter, the school, and my family were experiencing and personally scheduled a visit for us to Orchard Place Campus. After experiencing the benefits of the residential program and school-based services, I asked to join the Orchard Place Board as a parent advocate.

The effectiveness of the programs first drew me to the mission of Orchard Place. Later, it was getting to know the leaders and staff who deliver on that mission and recognizing the great need for children's mental health services in Iowa. Strong and healthy communities begin with our children. Supporting Orchard place is an active way to engage in the overall well-being of our state.

“ When people choose to volunteer and give to Orchard Place, they are supporting essential programs that improve poor mental health and disparities for children of Iowa.

Andrew Boscaljon
Orchard Place Operating Board



Mission Impact - Developing Strong Futures

When we began our journey with Orchard Place, our entire family was in shambles from the impact of a poor state mental health system and sparse quality resources that leaves even the most well-connected and resourced families desperate. The entire OP staff, from administrative assistants to our psychiatrist and amazing IHP team, welcomed us with open and non-judgmental arms. They not only affirmed our experiences, but they also provided comprehensive support to our family. Often providers forget that mental health does not just impact one person but the entire family unit. Orchard Place fully understands and designs services specifically to help families heal.

The true heroes and champions who are genuinely making a daily difference are the amazing Orchard Place professionals. They receive youth and families under any situation and provide the most comprehensive and evidence-based, high-quality services.

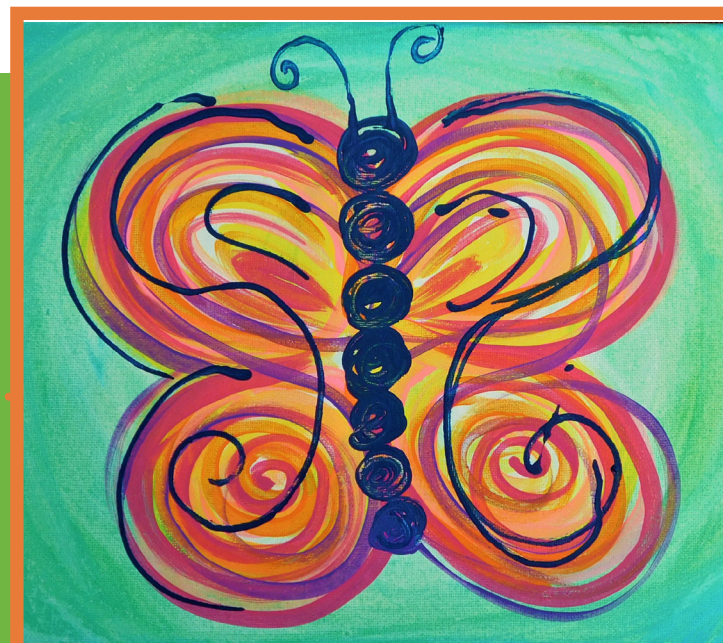
THEY SAVED OUR LIVES. TRULY.

- Grateful Family

A special thank you to this family for sharing their experience as part of a grant request for Orchard Place to expand trauma-informed care services. This mission-impact story includes excerpts from their letter of support.

Orchard Place Diversity, Equity, and Inclusion Commitment

Orchard Place is committed to embracing and building a culture where diversity is valued, while creating a more equitable and inclusive environment for clients, families, employees, and community members. We know that establishing an environment that supports clients and families who receive mental health services is critical to their well-being, and Orchard Place strives to place diversity, equity, and inclusion practices at the forefront of our daily work.



TRAUMA INFORMED CARE PROJECT



Orchard Place – Child Guidance Center is the lead agency for The Trauma Informed Care (TIC) Project which brings together stakeholders including other providers of mental health services, education, and Juvenile Justice. The 13th Annual Psychological Trauma & Juvenile Justice Conference will be June 6 and 7. Nationally recognized speakers will highlight current research and practice trends, and initiatives will be showcased to demonstrate how organizations can implement more trauma-informed care. The conference is open to all.



Legacy Impact

We are honored to celebrate the legacy and generosity of Harriet Macomber who made *The Chronicle of Philanthropy* list of the top 50 donors of 2022, joining other philanthropists such as Bill Gates, Michael Bloomberg, and Warren Buffett.

Through the Community Foundation of Greater Des Moines, Harriet donated \$45 million in 2022 to create endowments for eight local nonprofits including a \$5 million legacy gift to establish the Harriet S. and J. Locke Macomber Orchard Place Fund. The Fund's purpose is to initiate innovative programs to impact children's mental health in Central Iowa.

Planned gifts leave a legacy, impacting causes you care about beyond your lifetime. Orchard Place established the Elizabeth Mann Society to recognize the generosity and foresight of donors like you. If Orchard Place is part of your Estate Plan, please let us know as we'd love to include you in our Society membership and invite you to special events. We're also here to guide you through the planning process. Please reach out to our Director of Planned Giving & Major Gifts Doyle Monsma, CFRE, Orchard Place Foundation (515) 287-9648 or dmonsma@orchardplace.org to become a member or learn more.



Download our free comprehensive Estate Planning Kit to help you protect loved ones, organize everything in one place and save on taxes.

Leave a Legacy, Elizabeth Mann Society



Strategic Philanthropy

We give because your services are so vital to youth.

Joyce Chapman built a remarkable career in banking and continues to leave her mark through civic leadership and giving generously.

Joyce and her husband Rick strategically approach their philanthropy together. "Rick and I meet with our financial and tax advisors to determine the amount, timing, and vehicles for our charitable giving. Orchard Place is on our 'best practice' list because of its positive impact and low administrative costs ensuring that more than 90% of each dollar donated is used for service delivery."

Joyce has been especially drawn to Orchard Place's Endow Iowa Fund, "because working with the Community Foundation, I know the funds are used wisely and donors may receive a state tax credit of up to 25% for qualifying gifts."

"Plus, it feels good to invest in children's mental health," added Joyce. "Orchard Place provides quality services helping youth lead fulfilling lives and parents are assured that their children receive the best counseling possible."

Joyce and Rick Chapman are members of the Elizabeth Mann Society (EMS), a select group of forward-thinking donors who have included Orchard Place in their planned giving and/or have made a gift of \$10,000 or more through our Endow Iowa fund at the Community Foundation of Greater Des Moines. You too can also make a difference in the lives of children and families by becoming a member today, learn how by visiting our website and contacting our Foundation team.

ORCHARD PLACE FOUNDATION
515.287.9610
www.orchardplace.myplannedgift.org



CONNECTIONS

ORCHARD PLACE • SPRING/SUMMER 2023

YOU CAN HELP DEVELOP STRONG FUTURES

To make a gift to Orchard Place or schedule a personal tour, please contact:

Wendy Ingham, Vice President of Development
925 SW Porter Avenue
Des Moines, Iowa 50315
Phone: (515) 287-9610
wingham@orchardplace.org



ORCHARDPLACE.ORG



JULY 15 - 7:30PM

**FUNDRAISER
FOR CHILDRENS
MENTAL HEALTH**



MOONLIGHTCLASSICDSM.COM